

GUIDELINES FOR NON-TRADITIONAL RESEARCH OUTPUTS (NTRO)



Narelle Kanpatja Holland

Mulyarra 2009

acrylic on canvas

100 x 101 cm

The University Art Collection

Narelle Kanpatja Holland is an artist and weaver from the Blackstone community in the Ngaanyatjarra Lands of WA.

Image courtesy the artist and Papulankutja Artists

This publication was prepared and published on Awabakal lands. The University of Newcastle acknowledges the Traditional Custodians of all the land on which we live and work and pays respects to Elders, past, present and into the future.

TABLE OF CONTENTS

Introduction	3
Definition	3
Criteria	4
CW1 – Original Creative Works: Design / Architectural work.....	9
CW1 – Original Creative Works: Textual work.....	11
CW1 – Original Creative Works: Visual Art	13
CW1 – Original Creative Works: Musical composition	15
CW1 – Original Creative Works: Other.....	17
SW1 – Original Creative Works: Software.....	19
CW2 – Live Performance of Creative Works: Music	21
CW2 – Live Performance of Creative Works: Dance	23
CW2 – Live Performance of Creative Works: Play / Drama / Theatre	25
CW2 – Live Performance of Creative Works: Inter-arts.....	27
CW3 – Recorded / Rendered Works: Performance	29
CW3 – Recorded / Rendered Works: Audio / Visual Recording	31
CW3 – Recorded / Rendered Works: Digital Creative Works	33
CW3 – Recorded / Rendered Works: Inter-arts	35
CW3 – Recorded / Rendered Works: Web site / Exhibitions	37
CW4 – Curated / Produced Exhibition / Event: Exhibition / Event.....	39
CW4 – Curated / Produced Exhibition / Event: Festival	41
CW4 – Curated / Produced Exhibition / Event: Web Based Exhibition.....	43
CW4 – Curated / Produced Exhibition / Event: Other Exhibition (scholarly)	45
RR1 – Research Reports for an External Body	47

GUIDELINES FOR NON-TRADITIONAL RESEARCH OUTPUTS (NTRO)

INTRODUCTION

Policies and frameworks underpinning the University's reward and recognition processes and research reporting have traditionally recognised scholarly outputs in the forms of academic journal publications and their scholarly impact. Today, research has expanded beyond journal publications to include screenings, software applications, licenses and patents, performances, architecture and exhibitions, all collectively known as 'non-traditional research outputs' (NTRO).

This guideline provides the principles that underpin the collection and assessment processes of NTROs, including detailed criteria and output ratings by type of NTRO in order to formally recognise, encourage and reward academic researchers.

The University acknowledges the significant role research can play in improving the life outcomes for Aboriginal and Torres Strait Islander people in Australia. We also acknowledge the traditional and contemporary cultural practices that take many forms and demonstrate knowledge. The criteria listed throughout this document allows Aboriginal and Torres Strait Islander knowledge to be recognised and valued.

This guideline supports other key University processes and must be read in conjunction with:

- Performance Expectation Framework (PEF);
- Academic Promotions policy and procedure; and
- Reporting and Assessment of Publications, Research Support Services and University Library documentation.

DEFINITION

Research output may consist of any form of publicly available, assessable materials *embodying research*, whether produced by writing, making, composing, designing, performing, or curating. Non-Traditional Research Outputs (NTRO) may include anything with a research basis from highly experimental works of creative art – music or visual art, for example, creative writing, dance or design – through to scholarly editions and translations, website creation, software creation, databases, clinical guidelines and commissioned reports for government or non-government bodies. Such outputs are produced by a range of individual and collaborative practices. NTROs differ from 'traditional research' outputs in their form, mode of production, societal impact and are classified differently for administrative purposes.

In considering NTROs, research is defined in the same way as it is for traditional outputs as the creation of new knowledge and/or the use of existing knowledge in a new and creative way, so as to generate new concepts, methodologies, and understandings in the relevant discipline area(s). This might include the synthesis and analysis of previous research to the extent that it is new and creative in itself and/or leads to new and creative outcomes.

Consistent with a broad notion of research and experimental development – whether defined as Basic, Strategic, Applied, Practice-as-research, Interdisciplinary and Transdisciplinary – the research for traditional and non-traditional outputs alike will be undertaken on a systematic basis in order to increase the stock of knowledge (including knowledge of humanity, culture, and society) or to use this stock of knowledge to devise new applications.

CRITERIA

RESEARCH CONTRIBUTION

Research contribution needs to be demonstrated either by evidence of the advancement or extension of knowledge or by innovation.

Advancement or extension of knowledge

The creation of works that advance or extend knowledge within and/or beyond a relevant field of research (rather than solely extending the knowledge of the individual researcher or research team). The output has enhanced, or is likely to enhance, knowledge, thinking, understanding, and/or practice in the relevant field. The work has developed new ideas or new data, and/or initiated new methods and forms of expression. The output demonstrates intellectual precision and/or systematic method and/or formal integrity.

This may include: the creation or performance of new texts or repertoires; the development of new techniques or modes of practice and performance (including collaboration), and of new insights through creation or performance; the adoption of new techniques of design or fabrication; reinterpretation through the introduction of new critical editions (in print or online); new applications of original research to social or industry issues.

Innovation

Work exhibiting a high degree of originality, value creation, novelty and challenging conventions.

This may include: hybrid forms, forging connections between usually unrelated practices and sub-disciplines; reconceptualising and/or reinventing inherited forms and practices; activating audiences (blurring relations between creators/performers and audience); interdisciplinary collaborations.

RESEARCH SIGNIFICANCE

Research significance needs to be demonstrated either by evidence of research excellence or by peer review.

Evidence of excellence

The formal quality assurance processes associated with the publication of traditional research outputs, like the involvement of recognised commercial book publishers, are frequently unavailable for non-traditional research outputs. To ensure that only quality non-traditional research outputs are reported, various other indicators of research excellence are used.

Indices of excellence would include locations/venues of public presentation agreed to be distinguished by discipline peers, including museums, galleries, theatres, conferences, festivals, media organisations, competitions, and commissioners. In the case of collaborative and cross-disciplinary projects, this may also include the involvement of distinguished personnel in a leading role (as actor, performer, director, artist, designer, architect, etc.).

Evidence of peer review

The main avenues for peer review are:

- print or electronic critical or scholarly essays, articles, reviews, conference papers, etc, acknowledging the output and written by peers
- recognition through short-listing, prizes, awards, or honours, reviewed and judged by a panel of peers
- commissioning through a peer review process
- competitively funded grant schemes
- factual documentary submission commissioned through a television broadcaster editorial process that is broadcast and reviewed publicly.

Peer review and peer impact are more difficult to measure for NTROs, in part because of the multivalent structure of many of the discipline fields, where academic, public service, and commercial sectors interact and merge imperceptibly. Moreover, peer review can occur both before and after the work is made publicly available.

RESEARCH OUTPUTS

NTROs are evaluated as a standard or major output.

Major output: substantially sustained endeavour, typically one to five years

Equivalent to the Higher Education Research Data Collection (HERDC) category A1 book. Substantially sustained and focused research endeavour for a major output can be demonstrated through:

- a credited or acknowledged sole, lead, or significant role within the (collaborative) production of an extensive or comprehensive output or body of work
- the published output exhibits more than one of the following attributes:
- a high degree of complexity and/or sophistication in structure, scope, scale
- novel or highly innovative concepts, methodologies, approaches, repertoire, inter-relationships
- a high degree of cultural significance
- a high degree of influence on peers in the field.

Engagement

A high degree of interaction between researchers and research end-users outside of academia, for the mutually beneficial transfer of knowledge, technologies, methods or resources.

Impact

A high degree of contribution that research makes to the economy, society, environment or culture, beyond the contribution to academic research.

Standard output: sustained endeavour, typically a few months to a year

Equivalent to the Higher Education Research Data Collection (HERDC) categories B1 book chapters, C1 refereed journal articles, E1 refereed conference papers. Sustained research endeavour for a standard output can be demonstrated through:

- a credited or acknowledged sole, lead, or significant role in the (collaborative) production of a substantial output or body of work
- the publically available output exhibits at least one of the following attributes:
 - a moderate degree of complexity and/or sophistication in structure or scale
 - the synthesis or extension of existing concepts, methodologies, approaches, repertoire and/or artistic or intellectual inter-relationships
 - a moderate degree of cultural significance
 - a moderate degree of influence on peers in the field.

Engagement

A moderate degree of interaction between researchers and research end-users outside of academia, for the mutually beneficial transfer of knowledge, technologies, methods or resources.

Impact

A moderate degree of contribution that research makes to the economy, society, environment or culture, beyond the contribution to academic research.

Portfolio of outputs

A portfolio of items may be submitted as a single NTRO. A portfolio consists of multiple outputs from the same underlying research endeavour that on their own may not meet the definition of research, but when presented collectively have comprehensible research content. It is important to note that all items within a portfolio must fall within the ERA reference period (or 5 years).

SUBMISSION PROCESS

Each NTRO submitted to the University must be accompanied by a research statement and include:

1. Research background: field, context and research question;
2. Research contribution: innovation and new knowledge; and
3. Research significance: evidence of excellence.

The research statement should include where possible evidence of engagement and potential for future impact.

A research statement of no more than 250 words/2000 characters as per the Australian Research Council (ARC) guidelines is required upon submission of each NTRO for assessment. A research statement for each component of a portfolio of outputs is not required, however, a research statement for the entire portfolio is required at the time of submission for assessment by the NTRO Committee.

Other supporting documentation or evidence of peer review should also be submitted including:

- Print or electronic critical or scholarly essays or citations, articles, reviews conference papers etc., acknowledging the research output and written by peers;

- Recognition through shortlisting, prizes, awards or honours, reviewed and judged by a panel of peers, selection for further exhibitions, events or publications;
- Commissioning through a peer review process; and
- Competitively funded grant schemes.

Researchers are encouraged to submit NTROs at any time throughout the year. Research publications and outputs are captured in NURO, the University's research publications repository. For further information on entering NTROs into NURO, refer to the UON NURO User Guide and the Reporting and Assessment of Publications guide.

SUPPORT FOR RESEARCHERS

[Research Advantage](#) provides training and development opportunities for researchers who produce NTROs. This support includes:

- Assistance in writing a research statement;
- Assistance submitting NTROs for assessment and peer review;
- Facilitating the provision of workshops that educate on the agreed NTRO guidelines and process at our University;
- Facilitating the provision of workshops that educate on agreed research statement proforma and exemplars at our University; and
- Facilitating the provision of shut up and write NTRO research statements sessions.

ASSESSMENT PROCESS AND THE NTRO COMMITTEE

The University recognises that NTROs require specific knowledge and expertise to assess the quality of research outputs. The NTRO Committee will be established in 2020 to provide expert advice to colleagues and the broader University on the nature and value of NTROs.

The NTRO Committee will include academic staff who have multi-disciplinary expertise across textual, creative, built and software work types.

The NTRO Committee comprises:

1. Pro Vice-Chancellor Academic Excellence (Chair);
2. Head of School Architecture and Built Environment (or equivalent);
3. Head of School Creative Industries (or equivalent);
4. A representative from the disciplines of Humanities and Social Science;
5. A representative from the discipline of Computing and IT;
6. A representative from Research Services with expert knowledge of NTROs; and
7. Additional Committee members at the discretion of the Chair to provide expert knowledge and advice on the assessment of a non-traditional research output.

The composition of the NTRO Committee will be reviewed annually by the Chair.

The NTRO Committee will convene on a quarterly basis. Research Services will compile the NTRO submissions over the previous three (3) months for review and assessment by the NTRO Committee.

The role of the NTRO Committee is to:

- Peer review all NTROs produced by the University of Newcastle to ensure they meet the criteria for research assessment;
- Seek further evidence and information as required from the researcher to support their submission; and
- Recommend an ERA Research Quality Standard rating as defined below in 'Recommendations for ERA'.

Following the NTRO Committee assessment, Research Services will assign the relevant categories for inclusion in the annual Research Publications collection and update the NURO system. This data is used for University reporting including ERA and University rankings and informs academic workload as part of the Performance Expectations Framework.

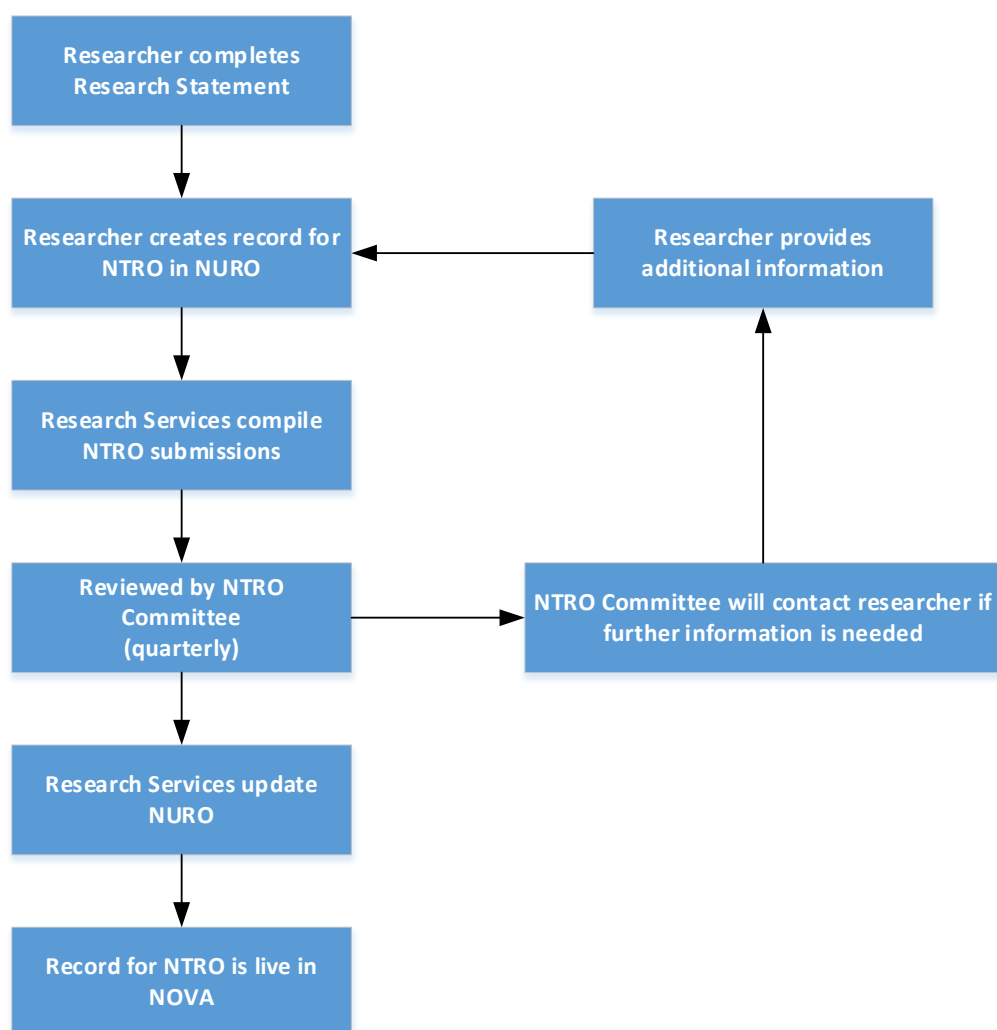
Recommendations for ERA

NTROs are subject to the same eligibility requirements that apply to Traditional Research Outputs (TRO). Each NTRO category has its own set of requirements that must be met to qualify for ERA reporting. Supporting documentation attached to the record should provide evidence of how the output meets these requirements. For all NTRO categories, evidence of research output must be documented and captured electronically.

The University NTRO Committee, in consultation with Research Services will recommend which works will be included in the University's ERA submission. The Research Quality Standard ratings are defined by ERA as:

A	Research quality that is world-leading in terms of originality, significance and rigour.
B	Research quality that is recognised internationally in terms of originality, significance and rigour.
C	Research quality that is recognised nationally in terms of originality, significance and rigour.
<C	No evidence of research quality, or a weakly articulated research statement.
PP	Research that could have the potential to be incorporated into a portfolio.

Diagram 1: NTRO Submission and Assessment Process



DETAILED CRITERIA AND OUTPUT WEIGHTINGS BY TYPE OF NON-TRADITIONAL RESEARCH OUTPUT

CW1 – ORIGINAL CREATIVE WORKS: DESIGN / ARCHITECTURAL WORK

EXPLANATION	CRITERIA
Definition	<p>Architecture and design (built or unbuilt) undertaken on a systematic basis in order to increase the stock of knowledge in the context of architecture, design, and creative arts research.</p> <p>The output document should be some form of design documentation, and there should be supporting documentation to show that the design has entered the public domain in some way.</p>
RESEARCH CONTRIBUTION	
<p>Advancement or Extension of Knowledge</p> <p>the knowledge extended should be that of the commissioning body and society, rather than solely that of the individual designer / design team</p>	<p>The creation of new and original work, both realised and unrealised, that extends knowledge and design typologies. This may include:</p> <ul style="list-style-type: none"> • new techniques of conceptualisation, design, fabrication, or compositional processes • new relationships to programs of social utility.
Innovation	<p>Architecture and design that exhibits originality in at least one of the following ways:</p> <ul style="list-style-type: none"> • by challenging disciplinary conventions • by yielding new and highly innovative approaches or techniques • by addressing existing issues in new ways • by creating unusual combinations of media.
RESEARCH SIGNIFICANCE	
Evidence of Excellence	<p>The significance of any new work rests on its entry into public discourse through exhibition, publication and/or public construction.</p> <p>Evidence of excellence would include:</p> <ul style="list-style-type: none"> • exhibition or publication in a venue recognised nationally or internationally by peers in the discipline • commissioning/funding by a distinguished public or private body, or industry partner. <p>Additional evidence of significance and impact may be provided by reproduction and repeat exhibition.</p>
<p>Evidence of Peer Review</p> <p>(by academic / scholarly / professional peers, as for traditional print publications)</p>	<p>Evidence of peer review may be provided by:</p> <ul style="list-style-type: none"> • substantial representations or reviews written by peers in the field and published (in print or online) in academic journals or professional publications, by commercial publishers in the national and international press, and/or by not-for-profit bodies of national and international reputation • the commissioning or funding of the design work by a competitive and/or peer-review process • design awards, prizes, honours, short-listing commendations, judged by a panel of peers.
OUTPUT WEIGHTINGS	

CW1 – ORIGINAL CREATIVE WORKS: DESIGN / ARCHITECTURAL WORK

EXPLANATION	CRITERIA
Standard Output sustained endeavour, typically several months to a year	<p>A standard output constitutes a new and significant addition to a designer's oeuvre which is made publicly available. The designer should have a credited or acknowledged sole, lead, or significant role in the production of the work, which should exhibit <i>at least one</i> of the following attributes:</p> <ul style="list-style-type: none"> • a moderate degree of complexity and/or sophistication in design technique, structure or scale • the synthesis or extension of existing concepts methodologies, approaches, repertoire, and/or conceptual or artistic inter-relationships • a moderate degree of influence on the designer's peers in the field • a moderate degree of cultural significance. <p>Engagement A moderate degree of interaction between researchers and research end-users outside of academia, for the mutually beneficial transfer of knowledge, technologies, methods or resources.</p> <p>Impact A moderate degree of contribution that research makes to the economy, society, environment or culture, beyond the contribution to academic research.</p>
Major Output substantially sustained endeavour, typically one to five years	<p>A major output involves new work of significant scale and artistic complexity. The designer should have a credited or acknowledged sole, lead, or significant role in the production of the publicly available work, which should exhibit <i>at least two</i> of the following attributes:</p> <ul style="list-style-type: none"> • a high degree of complexity and/or sophistication in design technique, structure, or scale • novel or highly innovative concepts, methodologies, approaches, repertoire, and/or conceptual or artistic inter-relationships • a high degree of influence on the designer's peers in the field • a high degree of cultural significance. <p>Engagement A high degree of interaction between researchers and research end-users outside of academia, for the mutually beneficial transfer of knowledge, technologies, methods or resources.</p> <p>Impact A high degree of contribution that research makes to the economy, society, environment or culture, beyond the contribution to academic research.</p>

CW1 – ORIGINAL CREATIVE WORKS: TEXTUAL WORK

EXPLANATION	CRITERIA
Definition	<p>Textual work in different fields of creative and/or critical endeavour that embodies research and is not eligible to be submitted as a traditional output, undertaken on a systematic basis in order to increase the stock of knowledge and/or advance the development and understanding of literary and/or other written forms.</p> <p>Examples from the ARC include: novels, collections of poetry, art reviews, essays, exhibition catalogues, and catalogue entries.</p> <p>(Where catalogues derive from an exhibition curated by the author, the research can only be submitted in one category, i.e. Textual or Curated exhibition.)</p>
RESEARCH CONTRIBUTION	
<p>Advancement or Extension of Knowledge</p> <p>the knowledge extended should be that of the commissioning body and society, rather than solely that of the individual designer / design team</p>	<p>The creation of new and original written works or the generation of novel insights about existing texts, which extend knowledge and/or advance the development and understanding in creative arts or scholarly disciplines.</p>
Innovation	<p>The work should exhibit originality, extending the boundaries of existing ideas, methodologies, approaches, or scholarly or creative techniques.</p> <p>The work's originality may inhere in its innovative literary techniques, or in its utilisation of usually unrelated forms, genres and/or subject matter.</p>
RESEARCH SIGNIFICANCE	
Evidence of Excellence	<p>The significance of any new work rests on its entry into public discourse through publication.</p> <p>Excellence is demonstrated by:</p> <ul style="list-style-type: none"> • publication in a venue recognised nationally or internationally by peers in the discipline • publication by major academic or commercial presses, galleries or museums • online hosting by major institutions • commissioning/funding by a distinguished public or private body. <p>Additional evidence of significance and impact may be provided by anthologisation and/or re-publication.</p>
<p>Evidence of Peer Review</p> <p>(by academic / scholarly / professional peers, as for traditional print publications)</p>	<p>Evidence of peer review may be provided by:</p> <ul style="list-style-type: none"> • publication in a peer-reviewed publication series • the commissioning or funding of the work by a nationally or internationally recognised peer-review body • awards, short-listing, prizes, honours, judged by a panel of peers • substantial reviews of the work written by peers in the field and published (in print and/or on-line) in academic journals, by commercial publishers in the national or international press, and/or by not-for-profit bodies of national and international reputation.

OUTPUT WEIGHTINGS

Standard Output

sustained endeavour, typically several months to a year

A standard output constitutes a new and significant addition to an author's oeuvre. The author should have a credited or acknowledged sole author or a significant role in the creation of the published work, which should exhibit *at least one* of the following attributes:

- a moderate degree of complexity and/or sophistication in literary technique, structure or scale
- the synthesis or extension of existing concepts methodologies, approaches, and/or intellectual or artistic inter-relationships
- a moderate degree of influence on the author's peers in the field
- a moderate degree of cultural significance.

Engagement

A moderate degree of interaction between researchers and research end-users outside of academia, for the mutually beneficial transfer of knowledge, technologies, methods or resources.

Impact

A moderate degree of contribution that research makes to the economy, society, environment or culture, beyond the contribution to academic research.

Major Output

substantially sustained endeavour, typically one to five years

A major work involves new writing of significant scale and complexity, such as a novel, play, or major collection of short stories or poems. The author should have a credited or acknowledged sole author or a significant role in the creation of the published work, which should exhibit *at least two* of the following attributes:

- a high degree of complexity and/or sophistication
- novel or highly innovative concepts, methodologies, approaches, inter-relationships
- a high degree of influence on the author's peers in the field
- a high degree of cultural significance.

Engagement

A high degree of interaction between researchers and research end-users outside of academia, for the mutually beneficial transfer of knowledge, technologies, methods or resources.

Impact

A high degree of contribution that research makes to the economy, society, environment or culture, beyond the contribution to academic research.

CW1 – ORIGINAL CREATIVE WORKS: VISUAL ART

EXPLANATION	CRITERIA
Definition	Visual art work in an appropriate medium expressing ideas that lead to new knowledge and/or advance the development and understanding of the creative arts.
RESEARCH CONTRIBUTION	
Advancement or Extension of Knowledge the knowledge extended should be that of the commissioning body and society, rather than solely that of the individual designer / design team	The creation of new and original works of visual art that extend knowledge and/or advance the development and understanding of the creative arts, which might: <ul style="list-style-type: none"> • offer a new contribution to broader cultural debates • develop or extend art historical/theoretical debates surrounding specific genres of creative production (eg, painting, video, ceramics).
Innovation	The work should exhibit originality in at least one of the following ways: <ul style="list-style-type: none"> • the inclusion of ideas and forms new to a particular genre or to the visual arts generally • the incorporation of new technological research and/or new material/production methods • the use of new and/or unusual combinations of media in cross-disciplinary creations involving hybrid art forms and/or usually unrelated creative practices, eg: <ul style="list-style-type: none"> ○ art/science/scholarship ○ creative/critical work ○ performance/public art ○ sound/visual installations/sculpture ○ collaborative projects involving sound/film/mixed media.
RESEARCH SIGNIFICANCE	
Evidence of Excellence	The significance of any new work rests on its entry into public discourse through exhibition or other form of public dissemination. Evidence of excellence would include: <ul style="list-style-type: none"> • presentation in a venue recognised nationally or internationally by peers in the discipline, eg, a major festival/gallery location • commissioning/funding by a distinguished public or private body • inclusion of work in school or university curriculum • recognition, eg <ul style="list-style-type: none"> ○ an exhibition catalogue from a reputable international or local academic or commercial publisher ○ invitation to repeat exhibitions/ performances ○ awards and prizes ○ acquisition by a public or private collection ○ discussion and dissemination by esteemed organisations, eg, broadcast or televised.

CW1 – ORIGINAL CREATIVE WORKS: VISUAL ART

EXPLANATION

CRITERIA

Evidence of Peer Review

(by academic / scholarly / professional peers, as for traditional print publications)

Evidence of peer review may be provided by:

- substantial reviews written by peers in the field and published (in print or online) in academic journals, by commercial publishers in the national and international press, and/or by not-for-profit bodies of national and international reputation
- the commissioning or funding of the work/ exhibition/ performance by a competitive and/or peer-review process
- awards, prizes, honours, short-listing, etc., judged by a panel of peers.

OUTPUT WEIGHTINGS

Standard Output

sustained endeavour, typically several months to a year

A standard output constitutes a new and significant addition to the creator's oeuvre. The creator should have a credited or acknowledged sole, lead, or significant role in the production of the work, which should exhibit *at least one* of the following attributes:

- a moderate degree of complexity and/or sophistication in artistic structure or scale
- the synthesis or extension of existing concept, methodologies, approaches, repertoire, inter-relationships (artistic or otherwise)
- a moderate degree of influence on the creator's peers in the field
- a moderate degree of cultural significance.

Engagement

A moderate degree of interaction between researchers and research end-users outside of academia, for the mutually beneficial transfer of knowledge, technologies, methods or resources.

Impact

A moderate degree of contribution that research makes to the economy, society, environment or culture, beyond the contribution to academic research.

Major Output

substantially sustained endeavour, typically one to five years

A newly created major body of work/film/performance of significant scale and artistic complexity. The creator should have a credited or acknowledged sole, lead, or significant role in the production of the publicly available work, which should exhibit *at least two* of the following attributes:

- a high degree of complexity and/or sophistication in artistic structure, scope or scale
- novel or highly innovative concepts, methodologies, approaches, repertoire, inter-relationships (artistic or otherwise)
- a high degree of influence on the creator's peers in the field
- a high degree of cultural significance.

Engagement

A high degree of interaction between researchers and research end-users outside of academia, for the mutually beneficial transfer of knowledge, technologies, methods or resources.

Impact

A high degree of contribution that research makes to the economy, society, environment or culture, beyond the contribution to academic research.

CW1 – ORIGINAL CREATIVE WORKS: MUSICAL COMPOSITION

EXPLANATION	CRITERIA
Definition	<p>The expression in an appropriate medium of original musical ideas that leads to new knowledge and/or advances the development and understanding of the creative arts.</p> <p>(The research focus lies in the process of composing or creating itself, rather than in the performance or recording the composition, though a definitive version of the work must be publicly available.)</p>
RESEARCH CONTRIBUTION	
<p>Advancement or Extension of Knowledge</p> <p>the knowledge extended should be that of the commissioning body and society, rather than solely that of the individual designer / design team</p>	<p>The creation of new and original works that extend knowledge and/or build upon, or respond to, works by other composers, other creative artists, or researchers in music and other fields. This may include:</p> <ul style="list-style-type: none"> • the development or extension of the composer's own original musical language and aesthetics • the development of new approaches to existing materials, forms or ideas in composition • the development or extension of an existing art form.
Innovation	<p>The work should exhibit originality in at least one of the following ways:</p> <ul style="list-style-type: none"> • the inclusion of new compositional, instrumental or production techniques • the incorporation of new combinations of instruments or performance techniques • the inclusion of new theoretical knowledge or technological advances in the production of new musical material • the fusion of usually unrelated genres, forms or modes of creation/performance • the interaction with other creative arts (eg, sound/visual installations/sculpture, or collaborative projects involving sound/film/mixed media).
RESEARCH SIGNIFICANCE	
Evidence of Excellence	<p>The significance of any new work rests on its entry into public discourse through performance or other forms of public dissemination. Excellence is demonstrated by (1) the quality of the performers engaged, and/or (2) the quality of the venues in which the composition is performed, and/or (3) the selection of the work for publication or broadcast.</p> <ul style="list-style-type: none"> • Performers or groups should be nationally or internationally recognised as appropriate to the compositional genre. • Venues should be recognised as significant and appropriate to the performance genre, and would include major festivals, recognised state or national concert locations, and other recognised public venues. • Publishers of scores and/or recordings should be recognised commercial publishing bodies (national or international) or not-for-profit organisations of national or international reputation. • Broadcasters (whether commercial, institutional, or not-for-profit) should be of national or international reputation. <p>Additional evidence of significance and impact may be provided by repeat performances and reviews.</p>

Evidence of Peer Review

(by academic / scholarly / professional peers, as for traditional print publications)

Evidence of peer review may be provided by:

- publication in a peer-reviewed publication series
- the commissioning or funding of the work by a nationally or internationally recognised peer-review body
- a peer-review selection process for works performed by a prestigious performance group, festival, or venue
- awards, prizes, honours, short-listing, etc., judged by a panel of peers
- substantial reviews of the work written by peers in the field and published (in print and/or on-line) in academic journals, by commercial publishers in the national or international press, and/or by not-for-profit bodies of national and international reputation.

OUTPUT WEIGHTINGS

Standard Output

sustained endeavour, typically several months to a year

A standard output constitutes a new and significant addition to a composer's oeuvre. The composer should have a credited or acknowledged sole, lead, or significant role in the production of the publicly available work, which should exhibit *at least one* of the following attributes:

- a moderate degree of complexity and/or sophistication in musical structure or scale
- the synthesis or extension of existing concepts methodologies, approaches, repertoire, inter-relationships (musical or otherwise)
- a moderate degree of influence on the composer's peers in the field
- a moderate degree of cultural significance.

Engagement

A moderate degree of interaction between researchers and research end-users outside of academia, for the mutually beneficial transfer of knowledge, technologies, methods or resources.

Impact

A moderate degree of contribution that research makes to the economy, society, environment or culture, beyond the contribution to academic research.

Major Output

substantially sustained endeavour, typically one to five years

A major work involves new composition of significant scale and musical complexity, such as a symphony (or equivalent), an opera, an electronic composition of substantial scale or complexity, or a complex multi-media or mixed-media work. The composer should have a credited or acknowledged sole, lead, or significant role in the production of the publicly available work, which should exhibit *at least two* of the following attributes:

- a high degree of complexity and/or sophistication in musical structure, scope, scale
- novel or highly innovative concepts, methodologies, approaches, repertoire, inter-relationships (musical or otherwise)
- a high degree of influence on the composer's peers in the field
- a high degree of cultural significance.

Engagement

A high degree of interaction between researchers and research end-users outside of academia, for the mutually beneficial transfer of knowledge, technologies, methods or resources.

Impact

A high degree of contribution that research makes to the economy, society, environment or culture, beyond the contribution to academic research.

CW1 – ORIGINAL CREATIVE WORKS: OTHER

EXPLANATION	CRITERIA
Definition	Original research undertaken on a systematic basis in order to increase the stock of knowledge in fields across the research spectrum. May include research published in a form that enables dissemination of knowledge, for example critical scholarly editions (including digital editions), scholarly translations and technical standards. Other examples include licences and patents.
RESEARCH CONTRIBUTION	
Advancement or Extension of Knowledge the knowledge extended should be that of the commissioning body and society, rather than solely that of the individual designer / design team	The creation of new and original works that extend knowledge and/or advance the development and understanding in creative arts or scholarly disciplines. This might: <ul style="list-style-type: none"> • offer a new contribution to broad cultural debates • develop or extend historical, theoretical or design debates.
Innovation	The work should exhibit originality, extending the boundaries of existing ideas, methodologies, approaches, and/or scholarly or creative techniques. The work's originality may inhere in its innovative techniques, or in its utilisation of usually unrelated forms, genres and/or subject matter.
RESEARCH SIGNIFICANCE	
Evidence of Excellence	The significance of any new work rests on its entry into public discourse through publication. Excellence is demonstrated by: <ul style="list-style-type: none"> • publication in a venue recognised nationally or internationally by peers in the discipline • commissioning/funding by a distinguished public or private body. Additional evidence of significance and impact may be provided by anthologisation and/or re-publication.
Evidence of Peer Review (by academic / scholarly / professional peers, as for traditional print publications)	Evidence of peer review may be provided by: <ul style="list-style-type: none"> • publication in a peer-reviewed publication series • the commissioning or funding of the work by a nationally or internationally recognised peer-review body • awards, prizes, honours, short-listing, etc., judged by a panel of peers • substantial reviews of the work written by peers in the field and published (in print and/or on-line) in academic journals, by commercial publishers in the national or international press, and/or by not-for-profit bodies of national and international reputation.
OUTPUT WEIGHTINGS	

Standard Output

sustained endeavour, typically several months to a year

A standard output constitutes a new and significant addition to the work of the author. The author should have a credited or acknowledged sole author or a significant role in the creation of the published work, which should exhibit *at least one* of the following attributes:

- a moderate degree of complexity and/or sophistication
- the synthesis or extension of existing concepts methodologies, approaches, inter-relationships
- a moderate degree of influence on the author's peers in the field
- a moderate degree of cultural significance.

Engagement

A moderate degree of interaction between researchers and research end-users outside of academia, for the mutually beneficial transfer of knowledge, technologies, methods or resources.

Impact

A moderate degree of contribution that research makes to the economy, society, environment or culture, beyond the contribution to academic research.

Major Output

substantially sustained endeavour, typically one to five years

A major work involves new writing of significant scale and complexity, such as a major scholarly edition.

The author should have a credited or acknowledged sole author or a significant role in the creation of the published work, which should exhibit *at least two* of the following attributes:

- a high degree of complexity and/or sophistication
- novel or highly innovative concepts, methodologies, approaches, inter-relationships
- a high degree of influence on the author's peers in the field
- a high degree of cultural significance.

Engagement

A high degree of interaction between researchers and research end-users outside of academia, for the mutually beneficial transfer of knowledge, technologies, methods or resources.

Impact

A high degree of contribution that research makes to the economy, society, environment or culture, beyond the contribution to academic research.

SW1 – ORIGINAL CREATIVE WORKS: SOFTWARE

EXPLANATION	CRITERIA
Definition	<p>Software design or software code undertaken on a systematic basis in order to increase the stock of knowledge.</p> <p>The output should be some form of design documentation and code repository or code executable, and there should be supporting documentation to show that the software code has entered the public domain in some way.</p>
RESEARCH CONTRIBUTION	
<p>Advancement or Extension of Knowledge</p> <p>The knowledge extended should be that of the commissioning body and society, rather than solely that of the individual designer / design team</p>	<p>The creation of new and original realised work that extends knowledge and design typologies. This may include:</p> <ul style="list-style-type: none"> • new techniques of design, implementation, or deployment processes • new relationships to programs of social utility.
Innovation	<p>Software design and implementation that exhibits originality in at least one of the following ways:</p> <ul style="list-style-type: none"> • by challenging disciplinary conventions • by yielding new and highly innovative approaches or techniques • by addressing existing issues in new ways by creating unusual combinations of media.
RESEARCH SIGNIFICANCE	
Evidence of Excellence	<p>The significance of any new work rests on its entry into public discourse through deployment, publication and/or public construction.</p> <p>Evidence of excellence would include:</p> <ul style="list-style-type: none"> • deployment of software in a location recognised nationally or internationally by peers in the discipline • commissioning/funding by a distinguished public or private body, or industry partner. <p>Additional evidence of significance and impact may be provided by metrics of downloads, deployment or repeat usage.</p>
Evidence of Peer Review	<p>Evidence of peer review may be provided by:</p> <ul style="list-style-type: none"> • substantial representations or reviews written by peers in the field and published (in print or online) in academic journals or professional publications, by commercial publishers in the national and international press, and/or by not-for-profit bodies of national and international reputation • the commissioning or funding of the software design work or code implementation by a competitive and/or peer-review process • awards, prizes, honours, short-listing commendations, judged by a panel of peers. • Degree of uptake / use of a particular software application
OUTPUT WEIGHTINGS	

Standard Output

sustained endeavour, typically several months to a year

A standard output constitutes a new and significant addition to a designer's oeuvre which is made publicly available. The designer should have a credited or acknowledged sole, lead, or significant role in the production of the work, which should exhibit at least one of the following attributes:

- a moderate degree of complexity and/or sophistication in design technique, code structure, scale or deployment.
- the synthesis or extension of existing concepts, methodologies, approaches, repertoire, and/or conceptual inter-relationships
- a moderate degree of influence on the designer's peers in the field
- a moderate degree of cultural or industrial significance.

Engagement

A moderate degree of interaction between researchers and research end-users outside of academia, for the mutually beneficial transfer of knowledge, technologies, methods or resources.

Impact

A moderate degree of contribution that research makes to the economy, society, environment or culture, beyond the contribution to academic research.

Major Output

substantially sustained endeavour, typically one to five years

A major output involves new work of significant scale and complexity. The designer should have a credited or acknowledged sole, lead, or significant role in the production of the publicly available work, which should exhibit at least two of the following attributes:

- a high degree of complexity and/or sophistication in design technique, code structure, scale or deployment
- novel or highly innovative concepts, methodologies, approaches, repertoire, and/or conceptual inter-relationships
- a high degree of influence on the designer's peers in the field
- a high degree of cultural or industrial significance.

Engagement

A high degree of interaction between researchers and research end-users outside of academia, for the mutually beneficial transfer of knowledge, technologies, methods or resources.

Impact

A high degree of contribution that research makes to the economy, society, environment or culture, beyond the contribution to academic research.

CW2 – LIVE PERFORMANCE OF CREATIVE WORKS: MUSIC

EXPLANATION	CRITERIA
Definition	Musical performance embodying research and undertaken on a systematic basis in order to increase the stock of knowledge and/or advance understanding in the context of the arts and humanities.
RESEARCH CONTRIBUTION	
Advancement or Extension of Knowledge the knowledge extended should be that of the commissioning body and society, rather than solely that of the individual designer / design team	The live performance of new and original works that extends knowledge and/ or develops the work of other creative artists and researchers in music and other fields. This may include a live performance: <ul style="list-style-type: none"> • of new repertoire, such as a world première • of repertoire that has been newly discovered, edited, or interpreted by the creator • of repertoire that incorporates improvisation drawing on extensive research.
Innovation	The live performance should exhibit originality, extending the boundaries of existing ideas, methodologies, approaches, creative or improvisational techniques. This may include repertoire performed according to new ideas of performance practice.
RESEARCH SIGNIFICANCE	
Evidence of Excellence	The significance of any new work rests on its entry into public discourse through live performance, and subsequent forms of public dissemination. Excellence is demonstrated by: <ul style="list-style-type: none"> • performance in a venue recognised nationally or internationally by peers in the discipline • performance in association with performing bodies recognised nationally or internationally by peers in the discipline • the selection of work performed for broadcast or recording, where the broadcaster or recording publisher is recognised nationally or internationally by peers in the discipline. Additional evidence of significance and impact may be provided by repeat performances and reviews.
Evidence of Peer Review (by academic / scholarly / professional peers, as for traditional print publications)	Evidence of peer review may be provided by: <ul style="list-style-type: none"> • the commissioning or funding of the work by a nationally or internationally recognised peer-review body • awards, prizes, honours, short-listing, etc., judged by a panel of peers • substantial reviews of the work written by peers in the field and published (in print and/or on-line) in academic journals, by commercial publishers in the national or international press, and/or by not-for-profit bodies of national and international reputation.
OUTPUT WEIGHTINGS	

Standard Output

sustained endeavour, typically several months to a year

A standard output constitutes a new and significant addition to the work of the creator. The creator should have a credited or acknowledged sole, lead, or significant role in the publicly performed work, which should exhibit *at least one* of the following attributes:

- a moderate degree of complexity and/or sophistication in musical technique, structure or scale
- the synthesis or extension of existing concepts, methodologies, approaches, repertoire, or inter-relationships (musical or otherwise)
- a moderate degree of influence on the creator's peers in the field
- a moderate degree of cultural significance.

Engagement

A moderate degree of interaction between researchers and research end-users outside of academia, for the mutually beneficial transfer of knowledge, technologies, methods or resources.

Impact

A moderate degree of contribution that research makes to the economy, society, environment or culture, beyond the contribution to academic research.

Major Output

substantially sustained endeavour, typically one to five years

A major output involves new work of significant scale and complexity. The creator should have a credited or acknowledged sole, lead, or significant role in the production of the publicly performed work, which should exhibit *at least two* of the following attributes:

- a high degree of complexity and/or sophistication in musical technique, structure, or scale
- novel or highly innovative concepts, methodologies, approaches, repertoire, or artistic inter-relationships
- a high degree of influence on the creator's peers in the field
- a high degree of cultural significance.

Engagement

A high degree of interaction between researchers and research end-users outside of academia, for the mutually beneficial transfer of knowledge, technologies, methods or resources.

Impact

A high degree of contribution that research makes to the economy, society, environment or culture, beyond the contribution to academic research.

CW2 – LIVE PERFORMANCE OF CREATIVE WORKS: DANCE

EXPLANATION	CRITERIA
Definition	Dance performance embodying research and undertaken on a systematic basis in order to increase the stock of knowledge and/or advance understanding in the context of the arts and humanities.
RESEARCH CONTRIBUTION	
Advancement or Extension of Knowledge the knowledge extended should be that of the commissioning body and society, rather than solely that of the individual designer / design team	The live performance of new and original work that extends and/or develops new knowledge in the performing arts and other fields. This may include a live performance of new repertoire, such as a world première, or of repertoire that has been newly discovered, choreographed, or interpreted. It may also include the use of new approaches to established traditions of dance performance.
Innovation	The live performance should exhibit originality, extending the boundaries of existing ideas, methodologies, approaches, or practices. This may include repertoire performed according to new paradigms of performance based practice in dance and/or other fields of intellectual or artistic endeavour.
RESEARCH SIGNIFICANCE	
Evidence of Excellence	<p>The significance of any new work rests on its entry into public discourse through live performance, and subsequent forms of public dissemination.</p> <p>Excellence is demonstrated by:</p> <ul style="list-style-type: none"> • performance in a venue recognised nationally or internationally by peers in the discipline • performance in association with performing bodies recognised nationally or internationally by peers in the discipline • the selection of work performed for broadcast or recording, where the broadcaster or recording publisher is recognised nationally or internationally by peers in the discipline. <p>Additional evidence of significance and impact may be provided by repeat performances and reviews.</p>
Evidence of Peer Review (by academic / scholarly / professional peers, as for traditional print publications)	<p>Evidence of peer review may be provided by:</p> <ul style="list-style-type: none"> • the commissioning or funding of the work by a nationally or internationally recognised peer-review body • awards, prizes, honours, short-listing, etc., judged by a panel of peers • substantial reviews of the work written by peers in the field and published (in print and/or on-line) in academic journals, by commercial publishers in the national or international press, and/or by not-for-profit bodies of national and international reputation.
OUTPUT WEIGHTINGS	

Standard Output

sustained endeavour, typically several months to a year

A standard output constitutes a new and significant addition to the work of the creator. The creator should have a credited or acknowledged sole, lead, or significant role in the production of the dance work, which should exhibit at least one of the following attributes:

- a moderate degree of complexity and/or sophistication in choreographic technique, structure or scale
- the synthesis or extension of existing concepts, methodologies, approaches, repertoire, or artistic inter-relationships
- a moderate degree of influence on the creator's peers in the field
- a moderate degree of cultural significance.

Engagement

A moderate degree of interaction between researchers and research end-users outside of academia, for the mutually beneficial transfer of knowledge, technologies, methods or resources.

Impact

A moderate degree of contribution that research makes to the economy, society, environment or culture, beyond the contribution to academic research.

Major Output

substantially sustained endeavour, typically one to five years

A major output involves new work of significant scale and complexity. The work of the creator should have a credited or acknowledged sole, lead, or significant role in the production of the dance work, which should exhibit at least two of the following attributes:

- a high degree of complexity and/or sophistication in choreographical structure, scope, scale
- novel or highly innovative concepts, methodologies, approaches, repertoire, or artistic inter-relationships
- a high degree of influence on the creator's peers in the field
- a high degree of cultural significance.

Engagement

A high degree of interaction between researchers and research end-users outside of academia, for the mutually beneficial transfer of knowledge, technologies, methods or resources.

Impact

A high degree of contribution that research makes to the economy, society, environment or culture, beyond the contribution to academic research.

CW2 – LIVE PERFORMANCE OF CREATIVE WORKS: PLAY / DRAMA / THEATRE

EXPLANATION	CRITERIA
Definition	Theatre or other dramatic performance embodying research and undertaken on a systematic basis in order to increase the stock of knowledge and/or advance understanding in the context of the arts and humanities.
RESEARCH CONTRIBUTION	
Advancement or Extension of Knowledge the knowledge extended should be that of the commissioning body and society, rather than solely that of the individual designer / design team	A live theatrical performance of new and original work that extends knowledge and/or develops the work of other artists and researchers. This may include a performance of new work for live theatre, such as a world première, or of work that has been newly interpreted. It may also include the use of new approaches to traditions of dramatic performance.
Innovation	The live performance should exhibit originality, extending the boundaries of the art form, by introducing new ideas, methodologies, creative approaches, and/or techniques. This may include repertoire performed according to experimental processes.
RESEARCH SIGNIFICANCE	
Evidence of Excellence	The significance of any new work rests on its entry into public discourse through live performance, and subsequent forms of public dissemination. Excellence is demonstrated by: <ul style="list-style-type: none"> • performance in a venue recognised nationally or internationally by peers in the discipline • performance in association with other artists, partners or associations recognised nationally or internationally by peers in the discipline • the selection of work performed for recording and/or broadcast or, where the recording body or broadcaster is recognised nationally or internationally by peers in the discipline. Additional evidence of significance and impact may be provided by repeat performances and reviews.
Evidence of Peer Review (by academic / scholarly / professional peers, as for traditional print publications)	Evidence of peer review may be provided by: <ul style="list-style-type: none"> • the commissioning or funding of the work by a nationally or internationally recognised peer-review body • awards, prizes, honours, short-listing, etc., judged by a panel of peers • substantial reviews of the work written by peers in the field and published (in print and/or on-line) in academic journals, by commercial publishers in the national or international press, and/or by not-for-profit bodies of national and international reputation.
OUTPUT WEIGHTINGS	

Standard Output

sustained endeavour, typically several months to a year

A standard output constitutes a new and significant addition to the work of the creator. The creator should have a credited or acknowledged sole, lead, or significant role in the production of the performance, which should exhibit *at least one* of the following attributes:

- a moderate degree of complexity and/or sophistication in dramaturgy or performance technique, structure or scale
- the synthesis or extension of existing concepts, methodologies, approaches, repertoire, or inter-relationships
- a moderate degree of influence on the creator's peers in the field
- a moderate degree of cultural significance.

Engagement

A moderate degree of interaction between researchers and research end-users outside of academia, for the mutually beneficial transfer of knowledge, technologies, methods or resources.

Impact

A moderate degree of contribution that research makes to the economy, society, environment or culture, beyond the contribution to academic research.

Major Output

substantially sustained endeavour, typically one to five years

A major output involves new work of significant scale and complexity. The creator should have a credited or acknowledged sole, lead, or significant role in the production of the performance, which should exhibit *at least two* of the following attributes:

- a high degree of complexity and/or sophistication in dramaturgy or performance structure, scope, scale
- novel or highly innovative concepts, methodologies, approaches, repertoire, or artistic inter-relationships
- a high degree of influence on the creator's peers in the field
- a high degree of cultural significance.

Engagement

A high degree of interaction between researchers and research end-users outside of academia, for the mutually beneficial transfer of knowledge, technologies, methods or resources.

Impact

A high degree of contribution that research makes to the economy, society, environment or culture, beyond the contribution to academic research.

CW2 – LIVE PERFORMANCE OF CREATIVE WORKS: INTER-ARTS

EXPLANATION	CRITERIA
Definition	<p>Recorded/rendered creative works, often experimental, produced in association with other researchers in other disciplinary fields.</p> <p>Live performance of original work or a demonstrably new or innovative interpretation/production of an existing work embodying research and undertaken on a systematic basis in order to increase the stock of knowledge and/or advance understanding in fields across the research spectrum, primarily in the creative arts, design, and the humanities.</p>
RESEARCH CONTRIBUTION	
<p>Advancement or Extension of Knowledge the knowledge extended should be that of the commissioning body and society, rather than solely that of the individual designer / design team</p>	<p>The live performance of new and original works that extends and/ or develops new knowledge of the performing arts and/or other disciplines. This may include:</p> <ul style="list-style-type: none"> • performance of new repertoire, such as a world première • new applications, arrangements and techniques • experimentation and/or collaboration across disciplinary fields • new approaches to existing materials, forms or ideas.
Innovation	<p>Experimental live performance and/or interactive work that extends the boundaries of existing ideas, methodologies, approaches, or practices. The work should exhibit originality, which may be in one of the following ways:</p> <ul style="list-style-type: none"> • by using hybrid forms, usually unrelated creative practices or new combinations of performance genres • repertoire performed according to new ideas, paradigms and applications both within and outside the performing arts discipline • by challenging traditional relationships between artist, audience, social and physical spaces, such as investing the audience with an element of creative agency.
RESEARCH SIGNIFICANCE	
Evidence of Excellence	<p>The significance of any new work rests on its entry into public discourse through live performance and subsequent forms of public dissemination. Excellence is demonstrated by:</p> <ul style="list-style-type: none"> • installation or presentation in a venue recognised nationally or internationally by peers • dissemination by a commercial or not-for-profit body of national or international reputation • commissioning or funding by a distinguished public or private body • discussion and dissemination by esteemed broadcast organisations. <p>Additional evidence of significance and impact may be provided by anthologisation and/or re-publication.</p>

Evidence of Peer Review

(by academic / scholarly / professional peers, as for traditional print publications)

Evidence of peer review may be provided by:

- the commissioning or funding of the work by a nationally or internationally recognised peer-review body
- awards, prizes, honours, short-listing, etc., judged by a panel of peers
- substantial reviews of the work written by peers in the field and published (in print and/or on-line) in academic journals, by commercial publishers in the national or international press, and/or by not-for-profit bodies of national and international reputation.

OUTPUT WEIGHTINGS

Standard Output

sustained endeavour, typically several months to a year

A standard output constitutes a new and significant addition to the work of the creator. The creator should have a credited or acknowledged sole, lead, or significant role in the production of the performance, which should exhibit *at least one* of the following attributes:

- a moderate degree of complexity and/or sophistication in technique, structure, scale or interactivity
- the synthesis or extension of existing concepts, methodologies, approaches, repertoire, or artistic inter-relationships (performative or otherwise)
- a moderate degree of influence on the creator's peers in the field
- a moderate degree of cultural significance.

Engagement

A moderate degree of interaction between researchers and research end-users outside of academia, for the mutually beneficial transfer of knowledge, technologies, methods or resources.

Impact

A moderate degree of contribution that research makes to the economy, society, environment or culture, beyond the contribution to academic research.

Major Output

substantially sustained endeavour, typically one to five years

A major output involves new work of significant scale and complexity. The creator should have a credited or acknowledged sole, lead, or significant role in the production of the performance, which should exhibit at least two of the following attributes:

- a high degree of complexity and/or sophistication in structure, scope, scale or interactivity
- novel or highly innovative concepts, methodologies, approaches, repertoire, or artistic inter-relationships
- a high degree of influence on the creator's peers in the field
- a high degree of cultural significance.

Engagement

A high degree of interaction between researchers and research end-users outside of academia, for the mutually beneficial transfer of knowledge, technologies, methods or resources.

Impact

A high degree of contribution that research makes to the economy, society, environment or culture, beyond the contribution to academic research.

CW3 – RECORDED / RENDERED WORKS: PERFORMANCE

EXPLANATION	CRITERIA
Definition	<p>Performance embodying research and created or developed on a systematic basis specifically for a recorded medium in order to increase the stock knowledge and/or advance understanding in the arts and humanities.</p> <p>(Simple documentation of live performance of creative work is not eligible.)</p>
RESEARCH CONTRIBUTION	
<p>Advancement or Extension of Knowledge the knowledge extended should be that of the commissioning body and society, rather than solely that of the individual designer / design team</p>	<p>The new and original recording or rendering of performance that extends knowledge and/or develops the work of other creative artists and researchers in music, dance, theatre, and other fields. This may include a recorded performance of new repertoire, such as a world première recording, or of repertoire that has been newly discovered, edited, or interpreted by the performer. It may also incorporate improvisation specifically for the recording or rendering.</p>
Innovation	<p>The recorded or rendered performance should exhibit originality, extending the boundaries of existing ideas, methodologies, approaches, techniques, recording practices, or modes of production.</p> <p>The work's originality may inhere in the recording or rendering of a performance involving usually unrelated forms, genres, and/or subject matter.</p>
RESEARCH SIGNIFICANCE	
Evidence of Excellence	<p>The significance of any new work rests on its entry into public discourse through publication.</p> <p>Excellence is demonstrated by:</p> <ul style="list-style-type: none"> • commercial release under a label recognised by peers in the discipline • performance recorded in association with performing bodies recognised nationally or internationally by peers in the discipline • the selection of the work for broadcast, where the broadcaster is recognised nationally or internationally by peers in the discipline • commissioning/funding by a distinguished public or private body. <p>Additional evidence of significance and impact may be provided by anthologisation and/or the invitation to republish, and by reviews.</p>
<p>Evidence of Peer Review (by academic / scholarly / professional peers, as for traditional print publications)</p>	<p>Evidence of peer review may be provided by:</p> <ul style="list-style-type: none"> • the commissioning or funding of the work by a nationally or internationally recognised peer-review body • awards, prizes, honours, short-listing, etc., judged by a panel of peers • substantial reviews of the work written by peers in the field and published (in print and/or on-line) in academic journals, by commercial publishers in the national or international press, and/or by not-for-profit bodies of national and international reputation.
OUTPUT WEIGHTINGS	

Standard Output

sustained endeavour, typically several months to a year

A standard output constitutes a new and significant addition to the work of the creator. The creator should have a credited or acknowledged sole, lead, or significant role in the production of the published work, which should exhibit *at least one* of the following attributes:

- a moderate degree of complexity and/or sophistication in technique, structure, or scale
- the synthesis or extension of existing concepts, methodologies, approaches, repertoire, or artistic inter-relationships
- a moderate degree of influence on the creator's peers in the field
- a moderate degree of cultural significance.

Engagement

A moderate degree of interaction between researchers and research end-users outside of academia, for the mutually beneficial transfer of knowledge, technologies, methods or resources.

Impact

A moderate degree of contribution that research makes to the economy, society, environment or culture, beyond the contribution to academic research.

Major Output

substantially sustained endeavour, typically one to five years

A major work involves an extensive or comprehensive new recording of significant complexity. The creator should have a credited or acknowledged sole, lead, or significant role in the production of the publically available work, which should exhibit at least two of the following attributes:

- a high degree of complexity and/or sophistication in technique, structure, or scale
- novel or highly innovative concepts, methodologies, approaches, repertoire, or artistic inter-relationships
- a high degree of influence on the creator's peers in the field
- a high degree of cultural significance.

Engagement

A high degree of interaction between researchers and research end-users outside of academia, for the mutually beneficial transfer of knowledge, technologies, methods or resources.

Impact

A high degree of contribution that research makes to the economy, society, environment or culture, beyond the contribution to academic research.

CW3 – RECORDED / RENDERED WORKS: AUDIO / VISUAL RECORDING

EXPLANATION	CRITERIA
Definition	<p>A new and original research output embodying research that has been created specifically for presentation in an audio-visual format and is undertaken on a systematic basis in order to increase the stock of knowledge and/or advance understanding in the context of the creative arts or other scholarly disciplines.</p> <p>Examples include video, film, documentary, and other moving or still image based work.</p> <p>(Conference paper presentations are not eligible in this category.)</p>
RESEARCH CONTRIBUTION	
<p>Advancement or Extension of Knowledge</p> <p>the knowledge extended should be that of the commissioning body and society, rather than solely that of the individual designer / design team</p>	<p>New and original audio-visual work that extends knowledge and/or advances the development and understanding in the creative arts or scholarly disciplines. This may include:</p> <ul style="list-style-type: none"> • traditional scholarship presented in a documentary format • production of new material specifically for an audio-visual medium • development or use of new applications, techniques, methodologies or approaches • work developed through collaboration across disciplinary fields.
Innovation	<p>Audio-visual work that extends the boundaries of existing ideas, methodologies, approaches, applications or practices. The work should exhibit originality in at least one of the following ways:</p> <ul style="list-style-type: none"> • by developing new applications, production processes or modes of presentation • by using hybrid forms, involving usually unrelated creative practices or new combinations of disciplinary genres.
RESEARCH SIGNIFICANCE	
Evidence of Excellence	<p>The significance of any new work rests on its entry into public discourse through presentation in an audio-visual format.</p> <p>Evidence of excellence would include:</p> <ul style="list-style-type: none"> • presentation in a venue recognised nationally or internationally by peers • dissemination by a commercial or not-for-profit body of national or international reputation • commissioning or funding by a distinguished public or private body • discussion and dissemination by esteemed broadcast organisations. <p>Additional evidence of significance and impact may be provided by invitations to republish, and by reviews.</p>
<p>Evidence of Peer Review</p> <p>(by academic / scholarly / professional peers, as for traditional print publications)</p>	<p>Evidence of peer review may be provided by:</p> <ul style="list-style-type: none"> • the commissioning or funding of the work by a nationally or internationally recognised peer-review body • awards, prizes, honours, short-listing, etc., judged by a panel of peers • substantial reviews of the work written by peers in the field and published (in print and/or on-line) in academic journals, by commercial publishers in the national or international press, and/or by not-for-profit bodies of national and international reputation.

OUTPUT WEIGHTINGS

Standard Output

sustained endeavour, typically several months to a year

A standard output constitutes a new and significant addition to the work of the creator. The creator should have a credited or acknowledged sole, lead, or significant role in the production of the work, which should exhibit *at least one* of the following attributes:

- a moderate degree of complexity and/or sophistication in content and in technique, structure, or scale
- the synthesis or extension of existing concepts, methodologies, approaches, repertoire, and intellectual or artistic inter-relationships
- a moderate degree of influence on the creator's peers in the field
- a moderate degree of cultural significance.

Engagement

A moderate degree of interaction between researchers and research end-users outside of academia, for the mutually beneficial transfer of knowledge, technologies, methods or resources.

Impact

A moderate degree of contribution that research makes to the economy, society, environment or culture, beyond the contribution to academic research.

Major Output

substantially sustained endeavour, typically one to five years

A major output involves new work of significant scale and complexity. The creator should have a credited or acknowledged sole, lead, or significant role in the production of the work, which should exhibit *at least two* of the following attributes:

- a high degree of complexity and/or sophistication in content and in technique, structure, or scale
- novel or highly innovative concepts, methodologies, approaches, repertoire, and intellectual or artistic inter-relationships
- a high degree of influence on the creator's peers in the field
- a high degree of cultural significance.

Engagement

A high degree of interaction between researchers and research end-users outside of academia, for the mutually beneficial transfer of knowledge, technologies, methods or resources.

Impact

A high degree of contribution that research makes to the economy, society, environment or culture, beyond the contribution to academic research.

CW3 – RECORDED / RENDERED WORKS: DIGITAL CREATIVE WORKS

EXPLANATION	CRITERIA
Definition	<p>Original work created specifically for a digital medium embodying research and undertaken on a systematic basis in order to increase the stock of knowledge and/or advance understanding in fields across the research spectrum, primarily in design and the creative arts.</p> <p>Examples include multidimensional models, digital outputs of architectural and design projects, interactive computer applications, games, and visual artworks.</p> <p>The output should be in a form that is publicly available and enables dissemination of knowledge. Supporting documentation may be required to demonstrate that the digital creative work has entered the public domain.</p>
RESEARCH CONTRIBUTION	
<p>Advancement or Extension of Knowledge</p> <p>the knowledge extended should be that of the commissioning body and society, rather than solely that of the individual designer / design team</p>	<p>New and original digital creative work that extends knowledge and/or advances the development or understanding of design and/or the creative arts. This may include:</p> <ul style="list-style-type: none"> • the development or use of new applications, techniques, methodologies, or approaches • collaboration across disciplinary fields • new dynamic visualisation techniques and other forms of modelling • the extension of modelling approaches to additional dimensions • the use of new applications of existing material, forms, software, or ideas.
Innovation	<p>Experimental and/or interactive digital work that extends the boundaries of existing ideas, methodologies, approaches, applications, or practices. The work should exhibit originality, which may be in one of the following ways:</p> <ul style="list-style-type: none"> • by developing hybrid forms through new combinations of creative practices or media • by developing new applications or modes of interactivity • by applying visualisation and other forms of dynamic modelling in new fields.
RESEARCH SIGNIFICANCE	
Evidence of Excellence	<p>The significance of any new work rests on its entry into public discourse through publication.</p> <p>Excellence is demonstrated by:</p> <ul style="list-style-type: none"> • presentation in a venue recognised nationally or internationally by peers in the discipline • dissemination by a commercial or not-for-profit body of national or international reputation • commissioning or funding by a distinguished public or private body • discussion and dissemination by esteemed publishing or broadcasting organisations. <p>Additional evidence of significance and impact may be provided by invitations to republish and by reviews.</p>

Evidence of Peer Review

(by academic / scholarly / professional peers, as for traditional print publications)

Evidence of peer review may be provided by:

- the commissioning or funding of the work by a nationally or internationally recognised peer-review body
- awards, short-listing, prizes, honours, judged by a panel of peers
- substantial reviews of the work written by peers in the field and published (in print and/or online) in academic journals, by commercial publishers in the national or international press, and/or by not-for-profit bodies of national and international reputation.

OUTPUT WEIGHTINGS

Standard Output

sustained endeavour, typically several months to a year

A standard output constitutes a new and significant addition to the work of the creator. The creator should have a credited or acknowledged sole, lead, or significant role in the production of the digital work, which should exhibit *at least one* of the following attributes:

- a moderate degree of complexity and/or sophistication in technique, structure, or scale
- the synthesis or extension of existing concepts, methodologies, approaches, applications, or design/artistic inter-relationships
- a moderate degree of influence on the creator's peers
- a moderate degree of cultural significance.

Engagement

A moderate degree of interaction between researchers and research end-users outside of academia, for the mutually beneficial transfer of knowledge, technologies, methods or resources.

Impact

A moderate degree of contribution that research makes to the economy, society, environment or culture, beyond the contribution to academic research.

Major Output

substantially sustained endeavour, typically one to five years

A major output involves new work of significant scale and complexity. The creator should have a credited or acknowledged sole, lead, or significant role in the production of the digital work, which should exhibit *at least two* of the following attributes:

- a high degree of complexity and/or sophistication in technique, structure, or scale
- novel or highly innovative concepts, methodologies, approaches, applications, or design/artistic inter-relationships
- a high degree of influence on the creator's peers in the field
- a high degree of cultural significance.

Engagement

A high degree of interaction between researchers and research end-users outside of academia, for the mutually beneficial transfer of knowledge, technologies, methods or resources.

Impact

A high degree of contribution that research makes to the economy, society, environment or culture, beyond the contribution to academic research.

CW3 – RECORDED / RENDERED WORKS: INTER-ARTS

EXPLANATION	CRITERIA
Definition	Original or newly recorded or rendered creative work resulting from systematic research based on experimental, interactive, hybrid, or interdisciplinary arts processes, which increases the stock of knowledge and/or advances understanding in fields across the research spectrum, primarily in the creative arts.
RESEARCH CONTRIBUTION	
Advancement or Extension of Knowledge the knowledge extended should be that of the commissioning body and society, rather than solely that of the individual designer / design team	Newly recorded or rendered works that extend knowledge and/or advance the development or understanding of the creative arts. This may include: <ul style="list-style-type: none"> • new repertoire, such as a world première recording • new concepts, combinations, applications, arrangements, and creative techniques • experimentation or collaboration across disciplinary fields • the use of new approaches to existing content, forms, ideas, or techniques.
Innovation	Recorded or rendered experimental and/or interactive work that extends the boundaries of existing ideas, methodologies, approaches, or practices. The work should exhibit originality, which may be in one of the following ways: <ul style="list-style-type: none"> • by using hybrid forms comprising usually unrelated creative practices or new combinations of media • by challenging traditional relationships between artist, audience, and social and physical spaces, such as investing the audience with an element of creative agency.
RESEARCH SIGNIFICANCE	
Evidence of Excellence	The significance of any new work rests on its entry into public discourse through exhibition or publication. Excellence is demonstrated by: <ul style="list-style-type: none"> • installation or presentation in a venue recognised nationally or internationally by peers in the discipline • dissemination by a commercial or not-for-profit body of national or international reputation • commissioning or funding by a distinguished public or private body • discussion and dissemination by esteemed broadcast organisations. Additional evidence of significance and impact may be provided by anthologisation and/or invitations to republish and by reviews.
Evidence of Peer Review (by academic / scholarly / professional peers, as for traditional print publications)	Evidence of peer review may be provided by: <ul style="list-style-type: none"> • the commissioning or funding of the work by a nationally or internationally recognised peer-review body • awards, short-listing, prizes, honours, judged by a panel of peers • substantial reviews of the work written by peers in the field and published (in print and/or online) in academic journals, by commercial publishers in the national or international press, and/or by not-for-profit bodies of national and international reputation.

OUTPUT WEIGHTINGS

Standard Output

sustained endeavour, typically several months to a year

A standard output constitutes a new and significant addition to the work of the creator. The creator should have a credited or acknowledged sole, lead, or significant role in the production of the work, which should exhibit *at least one* of the following attributes:

- a moderate degree of complexity and/or sophistication in technique, structure, or scale
- the synthesis or extension of existing concepts, methodologies, approaches, or artistic inter-relationships
- a moderate degree of influence on the creator's peers
- a moderate degree of cultural significance.

Engagement

A moderate degree of interaction between researchers and research end-users outside of academia, for the mutually beneficial transfer of knowledge, technologies, methods or resources.

Impact

A moderate degree of contribution that research makes to the economy, society, environment or culture, beyond the contribution to academic research.

Major Output

Substantially sustained endeavour, typically one to five years

A major output involves new work of significant scale and complexity. The creator should have a credited or acknowledged sole, lead, or significant role in the production of the work, which should exhibit *at least two* of the following attributes:

- a high degree of complexity and/or sophistication in technique, structure, or scale
- novel or highly innovative concepts, methodologies, approaches, or artistic inter-relationships
- a high degree of influence on the creator's peers in the field
- a high degree of cultural significance.

Engagement

A high degree of interaction between researchers and research end-users outside of academia, for the mutually beneficial transfer of knowledge, technologies, methods or resources.

Impact

A high degree of contribution that research makes to the economy, society, environment or culture, beyond the contribution to academic research.

CW3 – RECORDED / RENDERED WORKS: WEB SITE / EXHIBITIONS

EXPLANATION	CRITERIA
Definition	<p>Original or newly rendered work embodying research that is created specifically for dissemination through a website and is undertaken on a systematic basis in order to increase the stock of knowledge and/or advance understanding in fields across the entire research spectrum. The research is concerned with creating or rendering content, rather than with selecting content produced by others.</p> <p>(Where the researcher has curated content or materials produced by others, the research should be submitted in the Curated/Produced Web-based Exhibition category.)</p>
RESEARCH CONTRIBUTION	
<p>Advancement or Extension of Knowledge the knowledge extended should be that of the audience or society, rather than solely that of the individual creator / creative team</p>	<p>New web content that extends or synthesises knowledge and/or advances the development or understanding of the creative arts, humanities, sciences, and social sciences. This may include:</p> <ul style="list-style-type: none"> • incorporation of new presentation techniques, methodologies, or approaches in web media • collaboration across disciplinary fields • the reorganisation of existing knowledge through new modes of association and presentation.
Innovation	<p>Experimental and/or interactive web content that extends the boundaries of existing ideas, methodologies, approaches, applications, or practices. The work should exhibit originality, which may be in one of the following ways:</p> <ul style="list-style-type: none"> • new combinations of creative practices or media enabling re-conceptualisation • through new intellectual, artistic, or design inter-relationships • the dynamic rendition of usually static material • new modes of interactivity for users.
RESEARCH SIGNIFICANCE	
Evidence of Excellence	<p>Experimental and/or interactive web content that extends the boundaries of existing ideas, methodologies, approaches, applications, or practices. The work should exhibit originality, which may be in one of the following ways:</p> <ul style="list-style-type: none"> • new combinations of creative practices or media enabling re-conceptualisation • through new intellectual, artistic, or design inter-relationships • the dynamic rendition of usually static material • new modes of interactivity for users.

Evidence of Peer Review

(by academic / scholarly / professional peers, as for traditional print publications)

Evidence of peer review may be provided by:

- the commissioning or funding of the work by a nationally or internationally recognised peer-review body
- awards, prizes, honours, short-listing, etc., judged by a panel of peers
- substantial reviews of the work written by peers in the field and published (in print and/or on-line) in academic journals, by commercial publishers in the national or international press, and/or by not-for-profit bodies of national and international reputation.

OUTPUT WEIGHTINGS

Standard Output

sustained endeavour, typically several months to a year

A standard output constitutes a new and significant addition to the work of the creator. The creator should have a credited or acknowledged sole, lead, or significant role in the production of the web content, which should exhibit at least one of the following attributes:

- a moderate degree of complexity and/or sophistication in technique, structure, or scale
- the synthesis or extension of existing concepts, methodologies, approaches, applications, or conceptual/artistic inter-relationships
- a moderate degree of influence on the curator's peers in the field
- a moderate degree of cultural significance.

Engagement

A moderate degree of interaction between researchers and research end-users outside of academia, for the mutually beneficial transfer of knowledge, technologies, methods or resources.

Impact

A moderate degree of contribution that research makes to the economy, society, environment or culture, beyond the contribution to academic research.

Major Output

Substantially sustained endeavour, typically one to five years

A major output involves new work of significant scale and complexity. The creator should have a credited or acknowledged sole, lead, or significant role in the production of the web content, which should exhibit at least two of the following attributes:

- a high degree of complexity and/or sophistication in technique, structure, or scale
- novel or highly innovative concepts, methodologies, approaches, applications, or conceptual/artistic inter-relationships
- a high degree of influence on the curator's peers in the field
- a high degree of cultural significance.

Engagement

A high degree of interaction between researchers and research end-users outside of academia, for the mutually beneficial transfer of knowledge, technologies, methods or resources.

Impact

A high degree of contribution that research makes to the economy, society, environment or culture, beyond the contribution to academic research.

CW4 – CURATED / PRODUCED EXHIBITION / EVENT: EXHIBITION / EVENT

EXPLANATION	CRITERIA
Definition	<p>The curation and/or production of a substantial collection of creative works exhibited together in that particular arrangement for the first time in a recognised gallery, museum, or event, where the curation embodies research and is undertaken on a systematic basis in order to increase the stock of knowledge and/or advance understanding in fields across the research spectrum, primarily in the creative arts, design, and the humanities. This should be accompanied by a well-researched publication that includes some form of curatorial statement, as well as the date and location of the exhibition.</p> <p>(Catalogue essays written by researchers who are not curators should be reported as Textual Works.)</p>
RESEARCH CONTRIBUTION	
<p>Advancement or Extension of Knowledge the knowledge extended should be that of the commissioning body and society, rather than solely that of the individual curator / curation team</p>	<p>Original curation of creative works or the generation of novel insights about existing works that extend or synthesise knowledge and/or advance the development and understanding of the creative arts, design, and/or humanities. This may include:</p> <ul style="list-style-type: none"> • creative works presented together for the first time • the incorporation of new curatorial techniques, methodologies, or approaches • synthesis of existing knowledge and novel juxtaposition of works to offer new interpretations • collaboration across disciplinary fields.
Innovation	<p>The exhibition or event should exhibit originality, extending the boundaries of existing ideas, methodologies, approaches, or scholarly or creative techniques.</p> <p>The exhibition or event's originality may inhere in its utilisation of usually unrelated forms, genres, and/or subject matter.</p>
RESEARCH SIGNIFICANCE	
Evidence of Excellence	<p>The significance of any new exhibition or event rests on its entry into public discourse.</p> <p>Evidence of excellence would include:</p> <ul style="list-style-type: none"> • exhibition or presentation in a venue recognised nationally or internationally by peers in the discipline • exhibition or presentation of creative works recognised as significant by peers in the discipline • commissioning/funding by a distinguished public or private body • discussion and dissemination in esteemed publishing or broadcasting organisations. <p>Additional evidence of significance and impact may be provided by the invitation to repeat the exhibition/event and by reviews.</p>

Evidence of Peer Review

(by academic / scholarly / professional peers, as for traditional print publications)

Evidence of peer review may be provided by:

- substantial reviews written by peers in the field and published (in print or online) in academic journals, by commercial publishers in the national and international press, and/or by not-for-profit bodies of national and international reputation
- the commissioning or funding of the event/ exhibition by a competitive and/or peer-review process
- awards, short-listing, prizes, honours, judged by a panel of peers.

OUTPUT WEIGHTINGS

Standard Output

sustained endeavour, typically several months to a year

A standard output constitutes a new and significant addition to the work of the curator. The curator should have a credited or acknowledged sole, lead, or significant curatorial role in the production of the exhibition or event, which should have at least one of the following attributes:

- a moderate degree of complexity and/or sophistication in curatorial technique, structure, or scale
- the synthesis or extension of existing concepts, methodologies, approaches, repertoire, and/or artistic inter-relationships
- a moderate degree of influence on the curator's peers in the field
- a moderate degree of cultural significance.

Engagement

A moderate degree of interaction between researchers and research end-users outside of academia, for the mutually beneficial transfer of knowledge, technologies, methods or resources.

Impact

A moderate degree of contribution that research makes to the economy, society, environment or culture, beyond the contribution to academic research.

Major Output

Substantially sustained endeavour, typically one to five years

A major output involves new curatorial work of significant scale and complexity. The curator should have a credited or acknowledged sole, lead, or significant curatorial role in the production of the exhibition or event, which should have at least two of the following attributes:

- a high degree of complexity and/or sophistication in curatorial technique, structure, or scale
- novel or highly innovative concepts, methodologies, approaches, repertoire, and/or artistic inter-relationships
- a high degree of influence on the curator's peers in the field
- a high degree of cultural significance.

Engagement

A high degree of interaction between researchers and research end-users outside of academia, for the mutually beneficial transfer of knowledge, technologies, methods or resources.

Impact

A high degree of contribution that research makes to the economy, society, environment or culture, beyond the contribution to academic research.

CW4 – CURATED / PRODUCED EXHIBITION / EVENT: FESTIVAL

EXPLANATION	CRITERIA
Definition	The curation of creative works or performances arranged together for the first time in a substantial festival, where the curation embodies research and has been undertaken on a systematic basis in order to increase the stock of knowledge in fields across the research spectrum, primarily in the creative arts, design, and the humanities. This should be accompanied by a program that includes a curatorial statement, as well as the date and location of each element of the festival.
RESEARCH CONTRIBUTION	
Advancement or Extension of Knowledge the knowledge extended should be that of the commissioning body and society, rather than solely that of the individual curator / curation team	Original curation of creative works or the generation of novel insights about existing works that extend or synthesise knowledge and/or advance the development and understanding of the creative arts, design, and/or humanities. This may include: <ul style="list-style-type: none"> • creative works presented together for the first time • the incorporation of new curatorial techniques, methodologies, or approaches • synthesis of existing knowledge and novel juxtaposition of works to offer new interpretations • collaboration across disciplinary fields.
Innovation	The festival should exhibit originality, extending the boundaries of existing ideas, methodologies, approaches, and/or scholarly or creative techniques. The festival's originality may inhere in its utilisation of usually unrelated forms, genres, and/or subject matter.
RESEARCH SIGNIFICANCE	
Evidence of Excellence	The significance of any new exhibition or event rests on its entry into public discourse. Evidence of excellence would include: <ul style="list-style-type: none"> • exhibition or presentation in a venue recognised nationally or internationally by peers in the discipline • exhibition or presentation of creative works recognised as significant by peers in the discipline • commissioning/funding by a distinguished public or private body • discussion and dissemination in esteemed publishing or broadcasting organisations. Additional evidence of significance and impact may be provided by the invitation to repeat the festival and by reviews.
Evidence of Peer Review (by academic / scholarly / professional peers, as for traditional print publications)	Evidence of peer review may be provided by: <ul style="list-style-type: none"> • substantial reviews written by peers in the field and published (in print or online) in academic journals, by commercial publishers in the national and international press, and/or by not-for-profit bodies of national and international reputation • the commissioning or funding of the event/ exhibition by a competitive and/or peer-review process • awards, short-listing, prizes, honours, judged by a panel of peers.

OUTPUT WEIGHTINGS

Standard Output

sustained endeavour, typically several months to a year

A standard output constitutes a new and significant addition to the work of the curator. The curator should have a credited or acknowledged sole, lead, or significant curatorial role in the production of the festival, which should exhibit at least one of the following attributes:

- a moderate degree of complexity and/or sophistication in curatorial technique, structure, or scale
- the synthesis or extension of existing concepts, methodologies, approaches, repertoire, and/or artistic inter-relationships
- a moderate degree of influence on the curator's peers in the field
- a moderate degree of cultural significance.

Engagement

A moderate degree of interaction between researchers and research end-users outside of academia, for the mutually beneficial transfer of knowledge, technologies, methods or resources.

Impact

A moderate degree of contribution that research makes to the economy, society, environment or culture, beyond the contribution to academic research.

Major Output

Substantially sustained endeavour, typically one to five years

A major output involves new curatorial work of significant scale and complexity. The curator should have a credited or acknowledged sole, lead, or significant curatorial role in the production of the festival, which should exhibit at least two of the following attributes:

- a high degree of complexity and/or sophistication in curatorial technique, structure, or scale
- novel or highly innovative concepts, methodologies, approaches, repertoire, and/or artistic inter-relationships
- a high degree of influence on the curator's peers in the field
- a high degree of cultural significance.

Engagement

A high degree of interaction between researchers and research end-users outside of academia, for the mutually beneficial transfer of knowledge, technologies, methods or resources.

Impact

A high degree of contribution that research makes to the economy, society, environment or culture, beyond the contribution to academic research.

CW4 – CURATED / PRODUCED EXHIBITION / EVENT: WEB BASED EXHIBITION

EXPLANATION	CRITERIA
Definition	<p>The curation and/or production of a substantial collection of material which embodies research and is undertaken on a systematic basis specifically for dissemination through a website in order to increase the stock of knowledge and/or advance understanding in fields across the research spectrum. The published site should include some form of introductory and/or curatorial statement.</p> <p>Examples include permanent digital repositories, digital editions of texts, interactive searchable databases, and digital reference works and archives in all fields of research.</p> <p>(Where the researcher created the content or materials being exhibited, the research should be submitted in the Recorded/Rendered Web Site/Exhibition category.)</p>
RESEARCH CONTRIBUTION	
<p>Advancement or Extension of Knowledge the knowledge extended should be that of the commissioning body and society, rather than solely that of the individual curator / curation team</p>	<p>Original curation or edition of digital material that extends or synthesises knowledge and/or advances the development and understanding in all scholarly disciplines. This may include:</p> <ul style="list-style-type: none"> the inclusion of newly digitised materials that significantly extends their availability and enhances their interpretation the incorporation of new techniques, methodologies, or approaches in web media collaboration across disciplinary fields the synthesis of existing knowledge and novel juxtaposition of ideas and images to offer new interpretations.
Innovation	<p>Experimental and/or interactive web-based exhibition, repository, or searchable database that extends the boundaries of existing ideas, methodologies, approaches, applications or practices.</p> <p>The website should exhibit originality, which may be in one of the following ways:</p> <ul style="list-style-type: none"> the exploitation of digital media to explore material in ways not possible in traditional exhibition or publication new combinations of usually unrelated materials dynamic rendition of usually static material new modes of creative visualisation, interactivity, or search ability for users.
RESEARCH SIGNIFICANCE	
Evidence of Excellence	<p>The significance of any new web-based exhibition or website rests on its entry into public discourse.</p> <p>Excellence is demonstrated by:</p> <ul style="list-style-type: none"> hosting by an industry or educational institution of national or international reputation amongst peers in the discipline commissioning or funding by a distinguished public or private body. <p>Additional evidence of significance and impact may be provided by invitations to republish and by reviews.</p>

Evidence of Peer Review

(by academic / scholarly / professional peers, as for traditional print publications)

Evidence of peer review may be provided by:

- the commissioning or funding of the work by a nationally or internationally recognised peer-review body
- awards, short-listing, prizes, honours, judged by a panel of peers
- substantial reviews of the work written by peers in the field and published (in print and/or online) in academic journals, by commercial publishers in the national or international press, and/or by not-for-profit bodies of national and international reputation.

OUTPUT WEIGHTINGS

Standard Output

sustained endeavour, typically several months to a year

A standard output constitutes a new and significant addition to the work of the curator. The curator should have a credited or acknowledged sole, lead, or significant role in the creation and curation of the website, which should exhibit at least one of the following attributes:

- a moderate degree of complexity and/or sophistication in digital technique, structure, or scale
- the synthesis or extension of existing concepts, methodologies, approaches, applications, and/or conceptual or artistic inter-relationships
- a moderate degree of influence on the curator's peers in the field
- a moderate degree of cultural significance.

Engagement

A moderate degree of interaction between researchers and research end-users outside of academia, for the mutually beneficial transfer of knowledge, technologies, methods or resources.

Impact

A moderate degree of contribution that research makes to the economy, society, environment or culture, beyond the contribution to academic research.

Major Output

Substantially sustained endeavour, typically one to five years

A major output involves new work of significant scale and complexity. The curator should have a credited or acknowledged sole, lead, or significant role in the creation and curation of the website, which should exhibit at least two of the following attributes:

- a high degree of complexity and/or sophistication in digital technique, structure, or scale
- novel or highly innovative concepts, methodologies, approaches, applications, and/or conceptual or artistic inter-relationships
- a high degree of influence on the curator's peers in the field
- a high degree of cultural significance.

Engagement

A high degree of interaction between researchers and research end-users outside of academia, for the mutually beneficial transfer of knowledge, technologies, methods or resources.

Impact

A high degree of contribution that research makes to the economy, society, environment or culture, beyond the contribution to academic research.

CW4 – CURATED / PRODUCED EXHIBITION / EVENT: OTHER EXHIBITION (SCHOLARLY)

EXPLANATION	CRITERIA
Definition	<p>The curation and/or production of a substantial collection of archaeological, scientific, or other material objects exhibited together in that particular arrangement for the first time in a recognised gallery, museum, or event where the curation embodies research and is undertaken on a systematic basis in order to increase the stock of knowledge and/or advance understanding in fields across the research spectrum. This should be accompanied by a well-researched publication that includes some form of curatorial statement, as well as the date and location of the exhibition.</p> <p>(Catalogue essays written by researchers who are not curators should be reported as Textual Works.)</p>
RESEARCH CONTRIBUTION	
<p>Advancement or Extension of Knowledge the knowledge extended should be that of the commissioning body and society, rather than solely that of the individual curator / curation of team</p>	<p>Original curation of archaeological, scientific, or other material objects that extends or synthesises knowledge and/ or advances the development and understanding in the humanities or other scholarly disciplines. This may include:</p> <ul style="list-style-type: none"> • objects presented together for the first time • incorporation of new curatorial techniques, methodologies, or approaches • synthesis of existing knowledge and novel juxtaposition of objects to offer new interpretations • collaboration across disciplinary fields.
Innovation	<p>The exhibition should exhibit originality, extending the boundaries of existing ideas, methodologies, approaches, and/or scholarly or creative techniques.</p> <p>The exhibition's originality may inhere in its utilisation of usually unrelated forms, genres, and/or subject matter.</p>
RESEARCH SIGNIFICANCE	
Evidence of Excellence	<p>The significance of any new exhibition rests on its entry into public discourse.</p> <p>Evidence of excellence would include:</p> <ul style="list-style-type: none"> • exhibition or presentation in a venue recognised nationally or internationally by peers in the discipline • exhibition or presentation of objects recognised as significant by peers in the discipline • commissioning/funding by a distinguished public or private body • discussion and dissemination in esteemed publishing or broadcasting organisations. <p>Additional evidence of significance and impact may be provided by the invitation to repeat the exhibition and by reviews.</p>

Evidence of Peer Review

(by academic / scholarly / professional peers, as for traditional print publications)

Evidence of peer review may be provided by:

- substantial reviews written by peers in the field and published (in print or online) in academic journals, by commercial publishers in the national and international press, and/or by not-for-profit bodies of national and international reputation
- the commissioning or funding of the exhibition by a competitive and/or peer-review process
- awards, short-listing, prizes, honours, judged by a panel of peers.

OUTPUT WEIGHTINGS

Standard Output

sustained endeavour, typically several months to a year

A standard output constitutes a new and significant addition to the work of the curator. The curator should have a credited or acknowledged sole, lead, or significant curatorial role in the production of the exhibition, which should have at least one of the following attributes:

- a moderate degree of complexity and/or sophistication in digital technique, structure, or scale
- the synthesis or extension of existing concepts, methodologies, approaches, applications, and/or conceptual or artistic inter-relationships
- a moderate degree of influence on the curator's peers in the field
- a moderate degree of cultural significance.

Engagement

A moderate degree of interaction between researchers and research end-users outside of academia, for the mutually beneficial transfer of knowledge, technologies, methods or resources.

Impact

A moderate degree of contribution that research makes to the economy, society, environment or culture, beyond the contribution to academic research.

Major Output

Substantially sustained endeavour, typically one to five years

A major output involves new curatorial work of significant scale and complexity. The curator should have a credited or acknowledged sole or lead curatorial role in the production of the exhibition, which should exhibit at least two of the following attributes:

- a high degree of complexity and/or sophistication in digital technique, structure, or scale
- novel or highly innovative concepts, methodologies, approaches, applications, and/or conceptual or artistic inter-relationships
- a high degree of influence on the curator's peers in the field
- a high degree of cultural significance.

Engagement

A high degree of interaction between researchers and research end-users outside of academia, for the mutually beneficial transfer of knowledge, technologies, methods or resources.

Impact

A high degree of contribution that research makes to the economy, society, environment or culture, beyond the contribution to academic research.

RR1 – RESEARCH REPORTS FOR AN EXTERNAL BODY

EXPLANATION	CRITERIA
Definition	<p>A report based on original research undertaken on a systematic basis to increase the stock of knowledge in the areas of government and non-government policy and practice, which has been commissioned or solicited by:</p> <ul style="list-style-type: none"> • an Australian, state, territory, local, foreign, or international government body or organisation • a company, industry organisation, industry peak body, or employer/employee association • a discipline recognised body or organisation operating in the not-for-profit sector • a recognised organisation other than the above, provided the organisation is external to the researcher's own institution.
RESEARCH CONTRIBUTION	
<p>Advancement or Extension of Knowledge the knowledge extended should be that of the commissioning body and society, rather than solely that of the individual curator / curation team</p>	<p>Original research that addresses existing social or industry issues in new ways and/or extends the boundaries of knowledge and/or existing concepts, methodologies, approaches, or techniques.</p>
Innovation	<p>Innovative research exhibiting a high degree of originality, which</p> <ul style="list-style-type: none"> • yields new approaches, including interdisciplinary or usually unrelated practices and/or • challenges disciplinary conventions and/or • produces new knowledge.
RESEARCH SIGNIFICANCE	
Evidence of Excellence	<p>Evidence of excellence would include:</p> <ul style="list-style-type: none"> • the commissioning or funding of the report by a distinguished government or non-government body • appointment through a quality selection process • affirmative citation in other reports or publications • recognition of research conclusions by experts employed in the relevant field of government and/or industry.
<p>Evidence of Peer Review (by academic / scholarly / professional peers, as for traditional print publications)</p>	<p>Evidence of peer review would include:</p> <ul style="list-style-type: none"> • the commissioning of the report through a peer-review tender process • recognition in critical or scholarly essays and/or articles (print or electronic) • acceptance of research report by funding body • recognition through an award or honour judged by a panel of peers.
OUTPUT WEIGHTINGS	

Standard Output

sustained endeavour, typically several months to a year

The author should have a credited or acknowledged sole, lead, or significant role in the production of the publicly available work, which should exhibit at least one of the following attributes:

- moderate degree of complexity and/or sophistication in structure or scale
- synthesis or extension of existing concepts, methodologies or techniques
- moderate degree of influence on peers in the field
- moderate degree of public policy, industry or cultural significance.

Engagement

A moderate degree of interaction between researchers and research end-users outside of academia, for the mutually beneficial transfer of knowledge, technologies, methods or resources.

Impact

A moderate degree of contribution that research makes to the economy, society, environment or culture, beyond the contribution to academic research.

Major Output

Substantially sustained endeavour, typically one to five years

The author should have a credited or acknowledged sole, lead, or significant role in the production of the publicly available work, which should exhibit at least two of the following attributes:

- high degree of complexity and/or sophistication in structure or scale
- novel or highly innovative concepts, methodologies or approaches
- high degree of influence on peers in the field
- high degree of public policy, industry or cultural significance.

Engagement

A high degree of interaction between researchers and research end-users outside of academia, for the mutually beneficial transfer of knowledge, technologies, methods or resources.

Impact

A high degree of contribution that research makes to the economy, society, environment or culture, beyond the contribution to academic research.

DOCUMENT CONTROL

Prepared by	Michelle Randall, Manager HR Client Services and Improvement, OPVCAE	Date – 30/09/2020
Reviewed by	Professor Jennifer Milam, PVC Academic Excellence Professor Janet Nelson, Deputy Vice-Chancellor (Research and Innovation) and Vice President Professor Frances Kay-Lambkin, PVC Research and Innovation Professor Paul Egglestone, Head of School Creative Industries Professor Sue Anne Ware, Head of School Architecture and Built Environments Dr Shamus Smith, Assistant Dean IT, FEBE Dr Paula Jones, Director Research and Innovation	Date – 9/10/2020
Executive Sponsor	Professor Janet Nelson, Deputy Vice-Chancellor (Research and Innovation) and Vice President Professor Jennifer Milam, PVC Academic Excellence	
Document Owner	Professor Janet Nelson, Deputy Vice-Chancellor (Research and Innovation) and Vice President Professor Jennifer Milam, PVC Academic Excellence	
Document Approval	Executive Committee	Date – 19/10/2020
Document Revisions	Removed point 4: Research Impact from the requirements of a Research Statement. Approved PVCAE.	Date - 12/11/2020